

Environmental and BTEX GC Systems



This Environmental GC is customized with a Thermal Desorber.

- PID Detector
- FID/DELCD Combination Detector
- Built-in, "whisper quiet" Air Compressor
- Built-in Method 5030 or 5030/5035 compliant Purge & Trap
- 4 channel PeakSimple Data System
- 60-meter Capillary Column
- ...on the compact [8610C](#) chassis

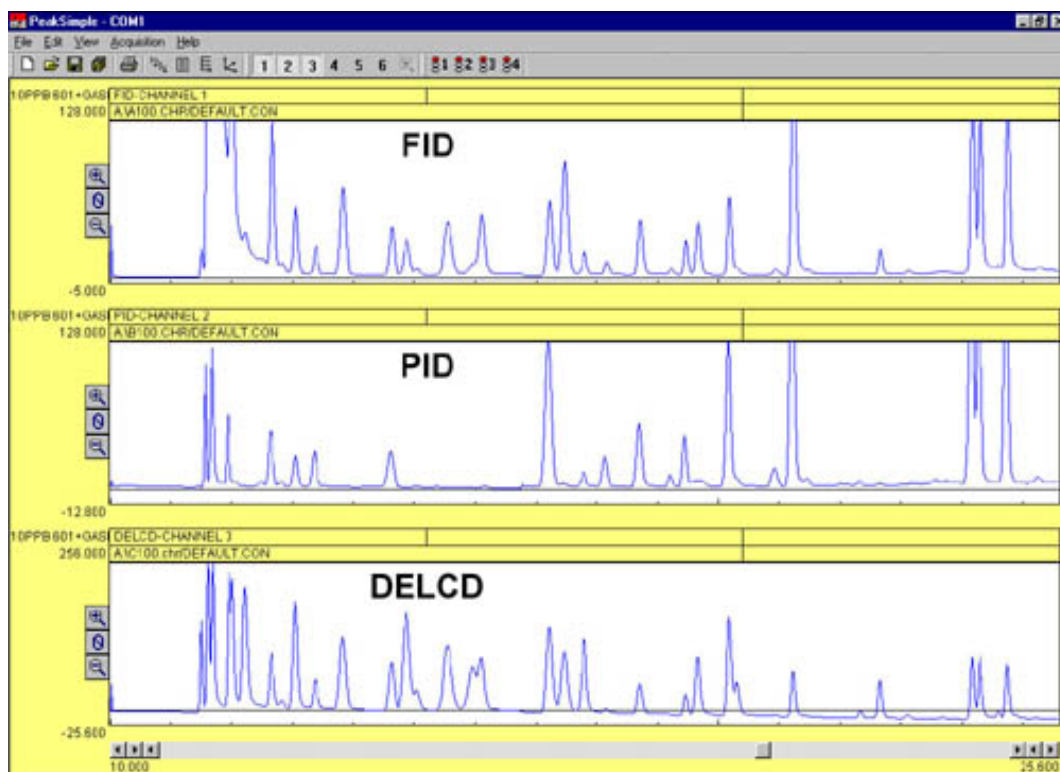
Optional Equipment:

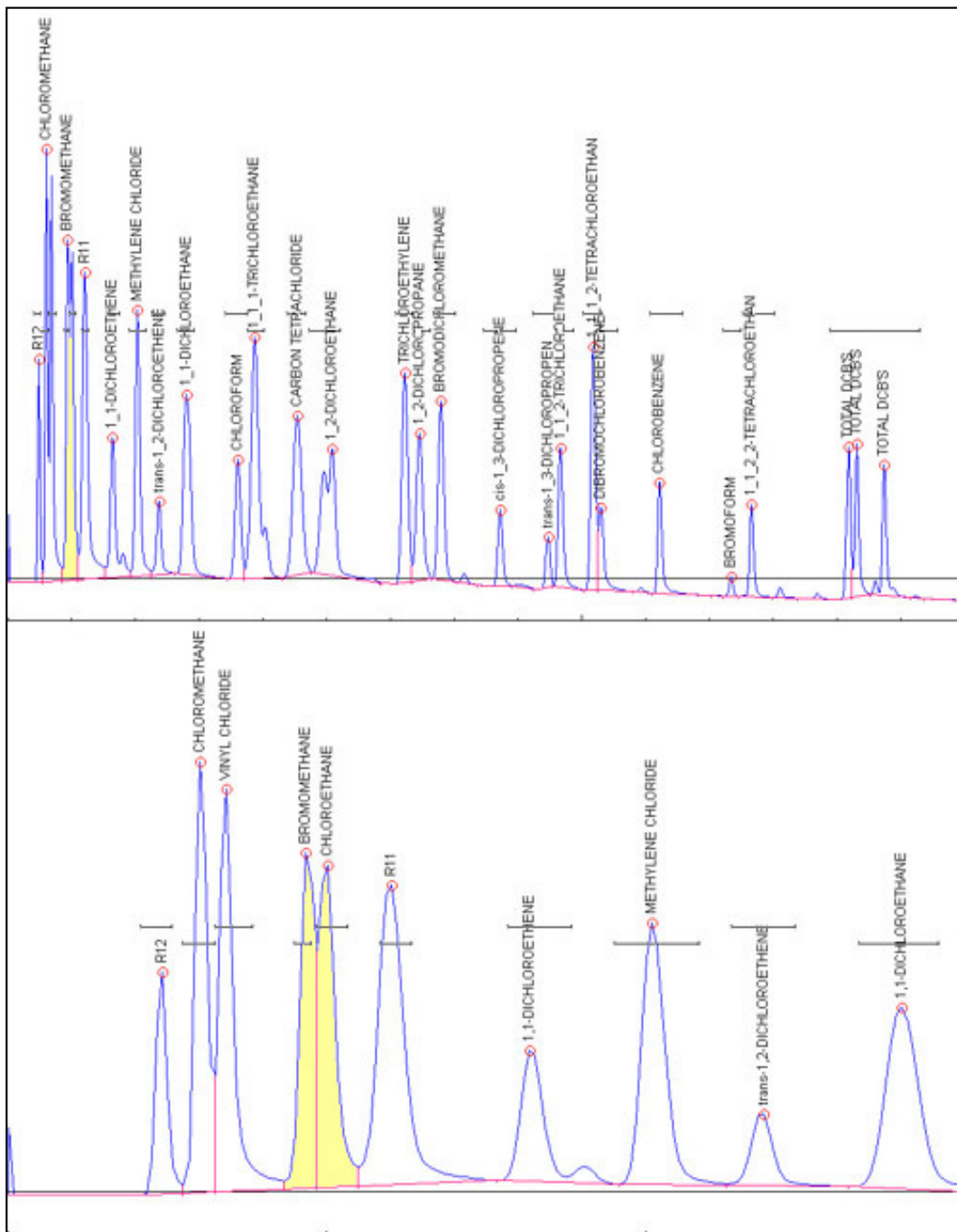
- [Thermal Desorber](#) for semi-volatiles
- An additional [gas sampling valve](#)
- A [vacuum pump interface](#) for air sampling
- Additional [detectors](#)

For laboratory or mobile field testing where space and versatility are critical, choose the Environmental GC system. Equipped with [Method 5030 or 5030/5035 compliant Purge & Trap](#), [PID](#) and [FID/DELCD](#) detectors, it will easily generate certification quality data for EPA Methods 8021, 8010, 8015, TO-14, and many others. With the optional [Thermal Desorber](#), you can quickly screen soil or other solid matrices for pesticides, PCBs, diesel, and other semi-volatiles. The standard [On-column](#) injection port allows for syringe injection, and a second injector may be installed if desired.

For users who do not need the chlorine/bromine selective [DELCD detector](#), the same configuration minus the DELCD is available as the **BTEX GC**.

These three chromatograms, displayed in PeakSimple, are from an analysis of Method 8021 standard + gases on an SRI Environmental GC system. Peak identities can be confirmed by comparing the results from the three different detectors. Peaks which often co-elute, such as benzene and carbon tetrachloride, can still be measured since the PID responds only to the benzene, while the DELCD only responds to the carbon tetrachloride.





The DELCD chromatogram is shown at left in more detail, with the peaks labeled for identification. The DELCD is completely selective for compounds containing chlorine and/or bromine. Other analytes do not respond at all, even at very high levels. The DELCD actually operates on the FID exhaust gases; therefore, all contaminants are pre-combusted by the FID to CO₂ and H₂O.

The first few peaks in the 8021 standard, including vinyl chloride, are of special interest to many analysts. The chromatogram to the left shows the expanded detail of the first few peaks in the analysis (the VOC gases). Note the exceptionally good resolution and peak shape delivered by the SRI Purge & Trap system with its dual trap technology.

[Please see pages 76-77 for more information on the Method 5030/5035 Purge & Trap.](#)

8610-0059	Environmental GC System	USD22,495.00
8610-0050	BTEX GC: same as the Environmental GC, but with PID and FID detectors only (no DELCD detector)	\$19,495.00
8690-5052	Upgrade to Method 5030/5035 compliant Purge & Trap	\$ 1,495.00

(VOLTAGE: for 110VAC, use "part number-1" [ex: 8610-0059-1] for 220VAC, use "part number-2")

Options & Upgrades: [6 channel USB PeakSimple data system](#), [Thermal Desorber](#), [Split/Splitless](#) and [PTV](#) injectors, [NPD detector](#), additional [valve](#), additional [columns](#)