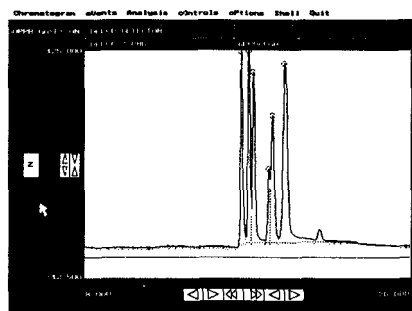
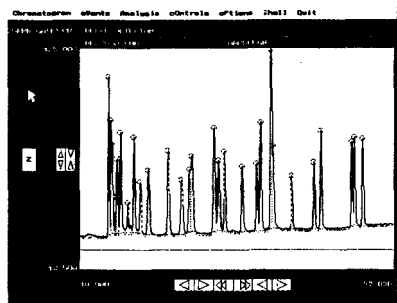


Very volatile molecules such as vinyl chloride must be trapped at the same time as the less volatile dichlorobenzenes. No single adsorbent works well for both, so historically a “gradient type” trap has been packed with bands of increasingly retentive adsorbents. As an improvement, SRI employs a sequentially desorbed two trap design, which improves peak shape and resolution for the early eluting components in the 601, 502.2, and 8021 analyses. See the chromatogram below showing how the first six peaks are sharp and well resolved.



601 Analysis on SRI 8610 CG with “Dry” ELCD

Expanded detail of early eluting gas peaks

8680-0051 **EPA STYLE PURGE & TRAP STAND ALONE (110 VAC)**

8680-2051 **EPA STYLE PURGE & TRAP STANDALONE (220 VAC)**

Same as our built in Purge & Trap, except we mount it as a standalone. The heated transfer line connects easily to nearly every GC's column oven.

8670-1305 **TRAP packed with TENAX-GR**

8670-1315 **TRAP packed with CARBOSIEVE**

8670-1320 **TRAP packed with CARBOPAK B**

PURGE &, TRAP AUTO SAMPLER

8690-0053 **10 Position P&T AUTOSAMPLER (110VAc)**

8690-2253 **10 Position P&T AUTOSAMPLER (220VAc)**

For many water or soil samples, the 10 position autosampler for the EPA Style Purge & Trap can run unattended under control of the PeakSimple Data System. Ten sparging vessels are mounted for easy access on the left side of the GC. All lines are heat traced stainless steel for ruggedness and minimal carryover. A blank may be inserted in the “Home” position for bake-out between samples. The long-life 22 port valve which sequentially selects 1 of the 10 spargers is electrically operated so compressed air is not required for operation !

ON-LINE LIQUID SAMPLER

8690-0075 **ON-LINE LIQUID SAMPLER**

NEW! Ideal for repetitive purge & trap analysis from a constant source. Connect the ON-LINE SAMPLER to a constant fluid source, such as a gravity feed from a water treatment process, and the PeakSimple data system will automatically load the ON-LINE SAMPLER sparging vessel for automatic periodic purge & trap analysis. Great for water and sewage treatment facilities. Connects directly to the Purge & Trap.

10 PORT GAS SAMPLING VALVES - Manual or Electric

WHY 10 PORTS? SRI uses 10 port valves because they cost no more than 6 port valves while providing a great deal of analytical flexibility. If your needs change, it's easy to re-plumb the valve to do another type of analysis.

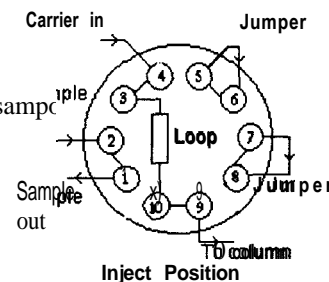
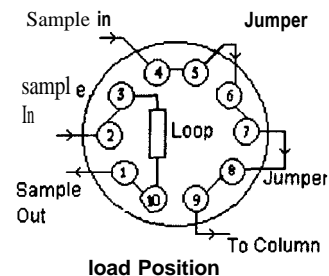
10 Port Gas Sampling Valves can be plumbed many different ways to accomplish a number of useful functions. SRI is happy to connect and test the valve at the factory any way you specify, or select one of these standard configurations:

INJECT ONLY-NO BACKFLUSH

This simple configuration actually only requires 6 ports, and is used to introduce the loop contents sample onto the column (see diagram).

INJECT AND BACKFLUSH

This configuration injects the sample in the foreflush direction, but reverses the flow of carrier gas when the valve is rotated back to the load position, speeding the elution of higher boiling compounds which are backed out of the column the way they entered.



8690-0063 **10 PORT GAS SAMPLING VALVE (manual)**

8690-0065 **10 PORT GAS SAMPLING VALVE (electric)**

Stainless steel valve is rated for operation from ambient to 240°C. Valve may be openly mounted on left side of GC, or enclosed in an optional thermostatted VALVE OVEN. The open air mounting is fine for simple inject-only applications, but if the valve will backflush it needs to be hot so backflushed peaks do not condense in the valve. The valve oven is the best way to mount the valve because it holds the valve at a constant temperature. Each valve is plumbed and mounted to the user's specifications, including all stainless steel tubing and fittings required.

8690-0066 **22-PORT GAS SAMPLING VALVE (electric)**

Useful for stream selection.

8690-0088 **THERMOSTATTED VALVE OVEN (mounted on GC)**

The Heated Valve Oven consists of an insulated aluminum box which encloses the gas sampling valve. Temperature is screwdriver adjustable from ambient to 200°C, and reads out in degrees Centigrade on the 8610 GC's front panel digital display. Highly recommended for valve mounting.

100% Satisfaction Guarantee



100% Satisfaction Guarantee

100% Satisfaction Guarantee

100% Satisfaction Guarantee

100% Satisfaction Guarantee

100% Satisfaction Guarantee

100% Satisfaction Guarantee

100% Satisfaction Guarantee

100% Satisfaction Guarantee

100% Satisfaction Guarantee

100% Satisfaction Guarantee