

S R I I n s t r u m e n t s

PEAKSIMPLE

DATA SYSTEM

Peaksimple Software from SRI instruments offers unmatched power and ease of use in low cost chromatography data systems.

FEATURES:

- 1) Acquires data and integrates up to four channels of data from two different GCs-or LCs.
- 2) Controls two SRI 8610 GCs from one computer.
- 3) Outputs up to four multi-ramp temperature programs and activates up to 32 timed events.
- 4) Multi-tasking background operation allows concurrent operation of other programs.
- 5) Mouse driven pull down windows for easy learning and operation.
- 6) Multi-point calibration curves.
- 7) Manual baseline correction with instant results recalculated.
- 8) Fast printing with retention times, peakname, area, and final amount printed on peaks.
- 9) Supports laser and dot matrix printers.

HARDWARE REQUIREMENTS:

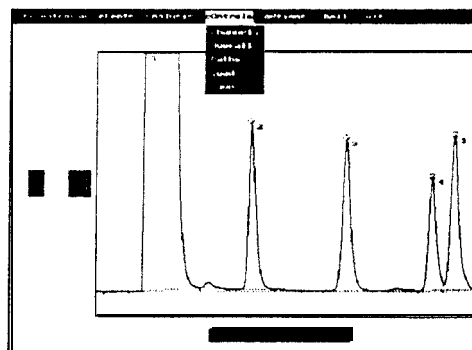
- 1 IBM PC compatible computer with 640K RAM.
- 2 Single 1.44MEG Floppy drive
- 3 Hercules Mono, CGA, VGA or SVGA(Win)
- 4 Epson 9 PIN compatible dot matrix printer or HP compatible laser.
- 5) SRI Model 8610C has the A/D board built-in to GC chassis

SPECIFICATIONS:

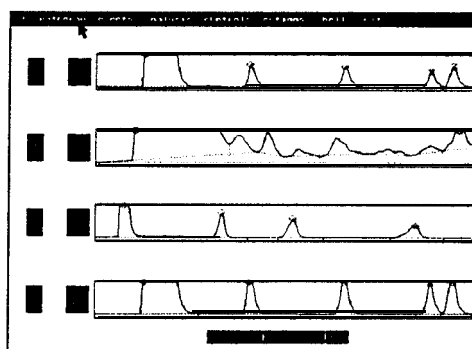
1, 2, 5, 10, 20HZ.
 Lawson 202 4-Channel Serial Port Board
 Input range: -5000 to + 5000 millivolts
 Resolution: 23 bits (0.01mv)
 Outputs: 8 Electromechanical contact closures 0 - 10 volts
 analog ramp
 Remote start: Grounding type

INFORMATION:

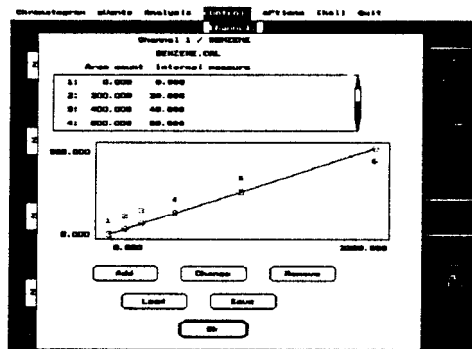
Peaksimple Data System (4 - Channel Serial Port)
 8610C GC - supplied with versions for DOS, Win3.1 and Win95
 and manual.



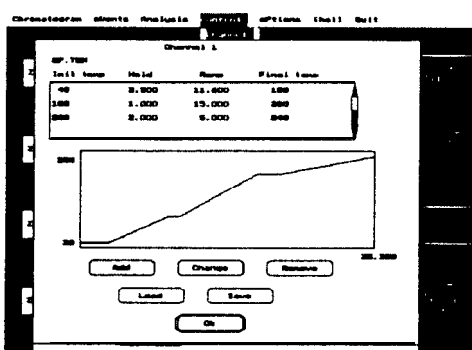
MOUSE SUPPORT WITH PULL DOWN MENUS, DIALOG BOXES, AND WINDOWS



ONE TO FOUR DATA CHANNELS
TWO INSTRUMENTS



MULTI-POINT CALIBRATION CURVES



UNLIMITED TEMPERATURE PROGRAM RAMP AND HOLDS

SRI Instruments

Australian Distributor - Chromalytic Technology - Tel +61 3 9762 2034 Fax : +61 3 9761 1169
 (310)

PEAK SIMPLE SOFTWARE

FEATURES	PEAKSIMPLE II	PEAKSIMPLE III
	Features now incorporated into PeakSimple-Win	
CALIBRATION CURVES	Multi-point, manually entered. Linear segments between points.	Multi-point best fit or single line best fit. Automatic re-calibration with calibration history.
PEAK IDENTIFICATION	Absolute retention time windows. Integration by peak area only. Single internal standard peak.	Multiple relative retention time reference peaks. Integration by area or height selectable peak by pk. Multiple internal standards. Peak threshold alarms .
DATA MANIPULATION	Manual integration tools allow point and click baseline placement.	Manual integration tools plus baseline subtraction, addition, peak merge, convolution, de-convolution, reversal and shift to zero
REPORTS	Integration report includes: Peak Name, retention, area, height, area % , normalized area%, external standard, internal standard, and units.	Full integration report plus Confirmation Report which compares results between channels, and QC report which tracks, bias, precision, std. dev, upper and lower control limits, spike recoveries, replicate samples, blank levels, MDL, DLR, MCL, PQL and others.
QUALITY CONTROL	Peaksimple II does NOT have any quality control features. All QC must be done manually.	* Peaksimple III has a complete QC management module which tracks and control charts all of your blanks, replicates, spikes, QCC check samples and retention times.

Features of ALL Versions of PEAKSIMPLE

* Note : some QC features are still being implemented in PS-WIN

- 1) Acquires and displays up to four channels of data from any two GCs or HPLCs
- 2) Multi-tasking background operation allows concurrent operation of other software
- 3) Supports dot matrix and laser printers
- 4) State of the art graphical mouse driven user interface is fun to use
- 5) Ascii or binary file storage for easy import or export to other programs
- 6) Peak grouping (contiguous and noncontiguous) for easy quantitation of multiple peaks
- 7) Advanced manual integration and baseline positioning tools
- 8) Area percent, external standard, internal standard and normalized peak calculations
- 9) Eight mechanical relay outputs per channel for "handshake/interface" with other equipment