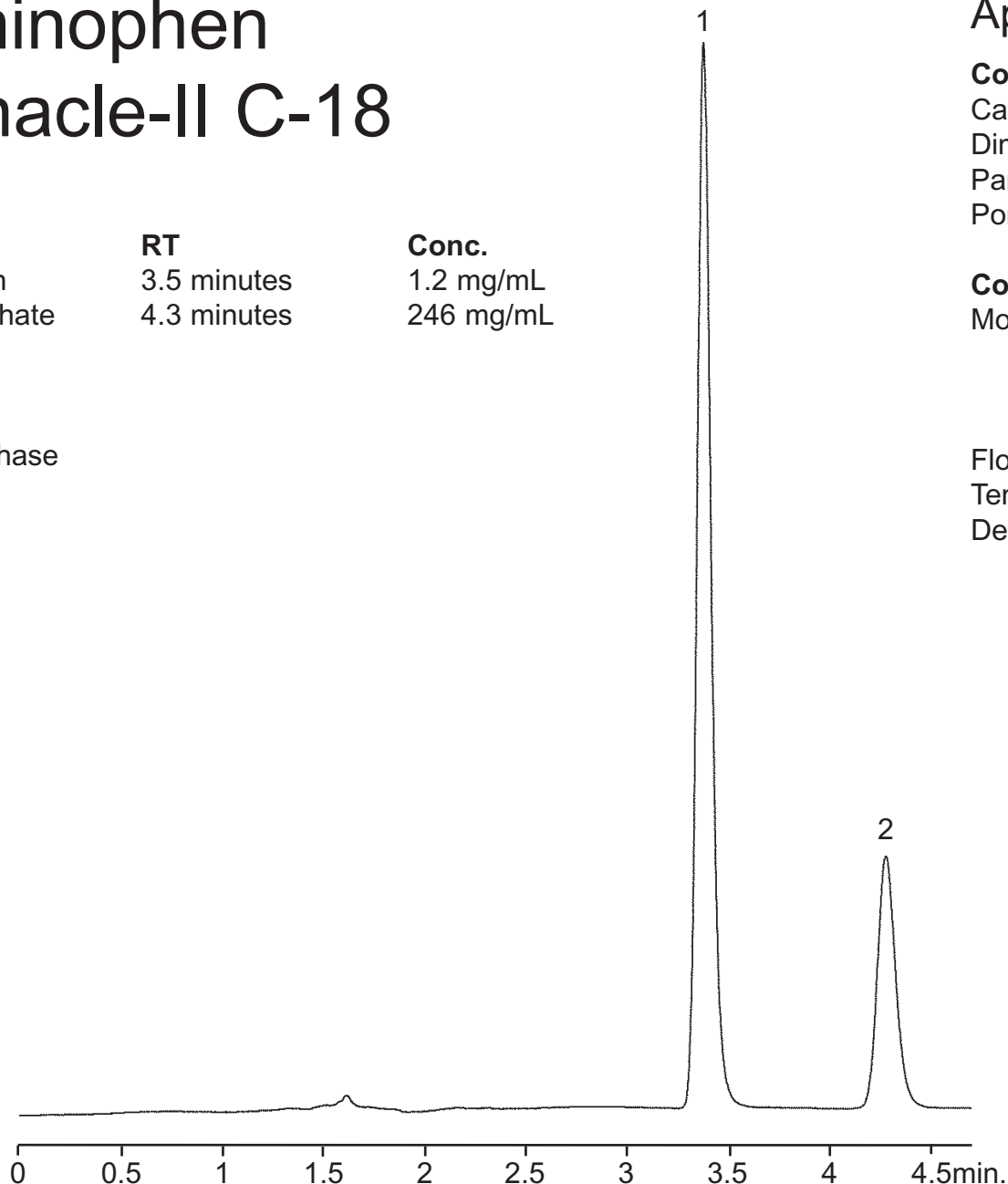


Acetaminophen on Pinnacle-II C-18

Peak List:	RT	Conc.
1. acetaminophen	3.5 minutes	1.2 mg/mL
2. codeine phosphate	4.3 minutes	246 mg/mL

Sample:
Inj.: 1.0 μ L
Solvent: mobile phase



Application Note: LC_0152

Column: Pinnacle-II C18
Catalog#: 9214565
Dimensions: 150x4.6mm
Particle size: 5 μ m
Pore size: 100Å

Conditions:
Mobile phase: 10mM potassium phosphate monobasic with 0.1% v/v TEA, pH 3.0 : acetonitrile (90:10)

Flow: 1.0mL/min.
Temp.: 27°C
Det.: UV @ 210nm

Hyperforin in St. John's Wort on a Pinnacle II C18

Applications Note: LC_0175

Peak List:

1. hyperforin
2. adhyperforin

Sample: St. John's Wort Capsule

Inj.: 20 μ L

Conc.: 4.17mg/mL

Solvent: methanol

Column: Pinnacle II C18

Catalog#: 9214565

Dimensions: 150x4.6mm

Particle size: 5 μ m

Pore size: 100 \AA

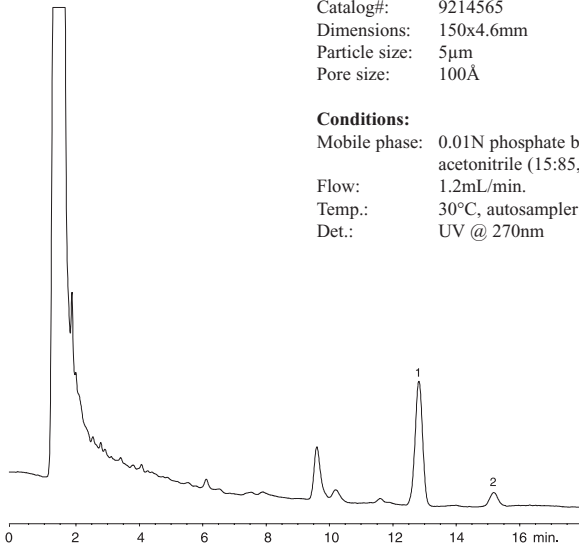
Conditions:

Mobile phase: 0.01N phosphate buffer, pH 2.5:
acetonitrile (15:85, v/v)

Flow: 1.2mL/min.

Temp.: 30°C, autosampler at 15°C

Det.: UV @ 270nm



BTEX Mix on Pinnacle II C18

Applications Note: LC_0161

Peak List:

1. benzene
2. toluene
3. o-xylene
4. ethylbenzene
5. m-xylene & p-xylene

Sample:

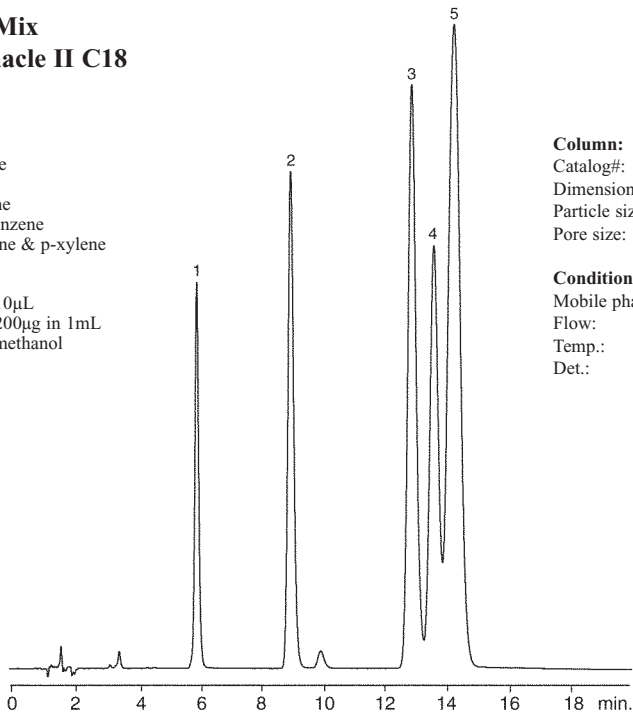
Inj.: 10 μ L
Conc.: 200 μ g in 1mL
Solvent: methanol

Column: Pinnacle-II C18

Catalog#: 9199565
Dimensions: 150x4.6mm
Particle size: 5 μ m
Pore size: 100 \AA

Conditions:

Mobile phase: water:acetonitrile (50:50, v/v)
Flow: 1.0mL/min.
Temp.: ambient
Det.: UV @ 254nm



Capsaicin on Pinnacle II C18

Applications Note: LC_0160

Peak List:

1. nordihydrocapsaicin
2. capsaicin
3. dihydrocapsaicin

Sample: habanero nugget extract

Inj.: 10 μ L

Conc.: 4000 μ g/mL

Solvent: ethanol

Column: Pinnacle-II C18

Catalog#: 9214565

Dimensions: 150x4.6mm

Particle size: 5 μ m

Pore size: 100 \AA

Conditions:

Mobile phase: A: 1% acetic acid in water (v/v)

B: acetonitrile

Time (minutes):	% B
0	50
2	50
9	80
12	80
13	50

Flow: 1.0mL/min.

Temp.: ambient

Det.: UV @ 280nm

