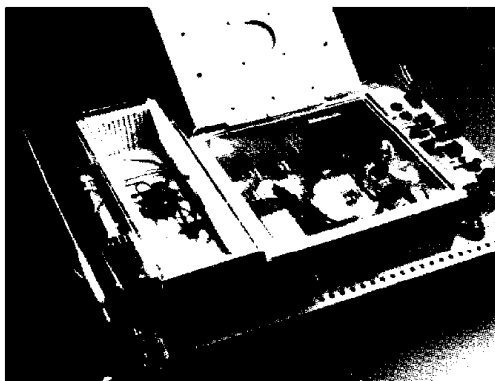


The Fully-featured SRI 8610C Gas Chromatograph

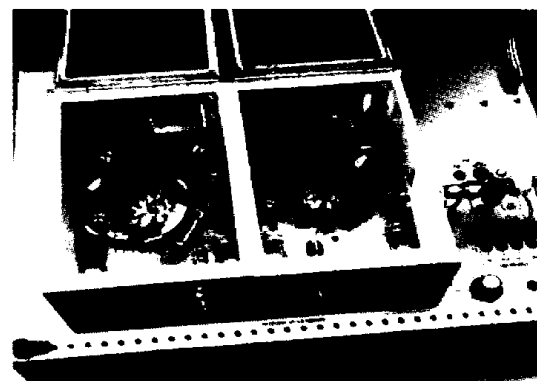
Optimize Your Chromatography Operations With An Affordable State-of-the-Art GC System That Will Perform Your Most Complex Methods With Ease

High-Temperature, Fast-Cooling, Insulated Column Oven



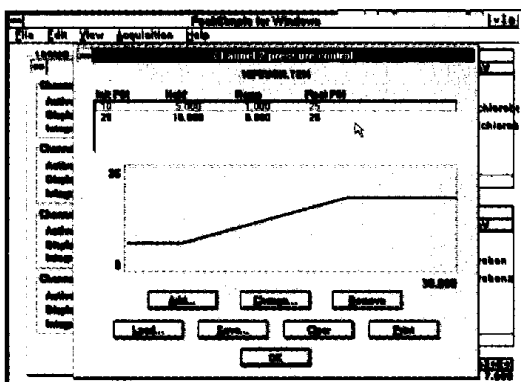
The column oven is capable of operation from ambient temperature to 400°C, both isothermally, and by temperature programming with unlimited ramps and holds. Ramp rates of up to 40°C per minute, and assisted cooling from 250°C to ambient in 5 minutes or less, are easily achieved.

Dual, Independently-Programmable Column Ovens



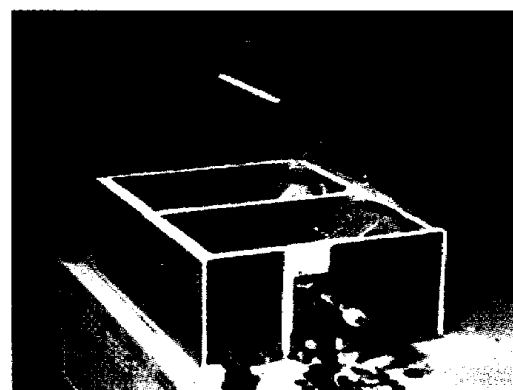
Dual, independently temperature-programmable column ovens may be mounted on the same GC, for "two-GCs-in-one" applications and maximum efficiency. Multidimensional chromatography is also possible using a dual oven 8610C GC, the ideal platform for complex separations.

Full Electronic Pressure Control (EPC)



Optimize your chromatography using electronic pressure control. The 8610C GC allows you to control your column head pressure during an analytical run with the ease of temperature programming. A considerable reduction in analysis time may be obtained using EPC. All GC system gases are EPC-controlled for maximum precision.

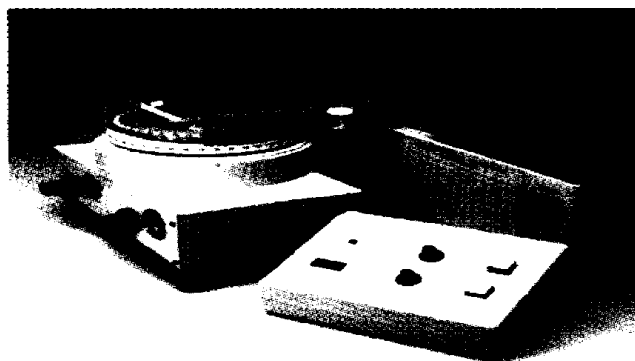
Up To 4 Detectors On The Same GC Chassis



Up to 4 GC detectors may be mounted on the 8610C GC chassis, for maximum versatility (PID, FID, TCD, FPD, NPD, ECD, DELCD, HID). Each detector is equipped with full electrometer / amplifier electronics and an adjustable heated zone for maximum detector stability. ECD and TCD detectors feature dedicated detector ovens.

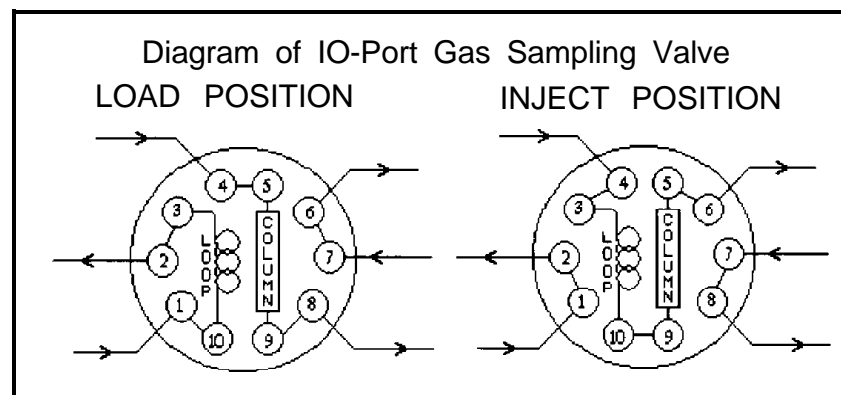
Seven Different Injector Options Available

A direct on-column injection port is provided as standard equipment. Heated, split-splitless injectors, dual injectors, liquid autosamplers, gas sampling valves, thermal soil desorbers, and purge-and-trap systems are also available.



Valves For Loop Sampling, Backflush, More

Up to 3 manual and data system-controlled gas sampling valves may be mounted, heated or unheated, on the 8610C GC for gas loop sampling, stream selection, analysis with backflush, and other applications as your analyses require.

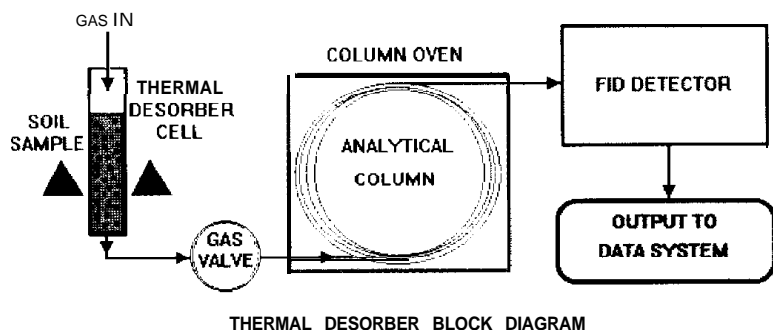


Easily Transported Via UPS Or As Airline Baggage In Protective Shipping Container



All SRI 8610C GCs are provided with a protective, reusable plastic shipping container appropriate for shipment via UPS, FedEx, and DHL. The container, safely securing the GC inside, is resistant to rough handling, and meets IATA and FAA dimensional requirements for accompanied baggage.

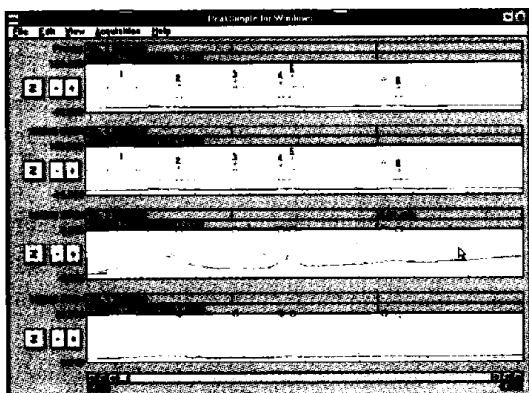
Thermally Desorb Your Soil | Solid Samples



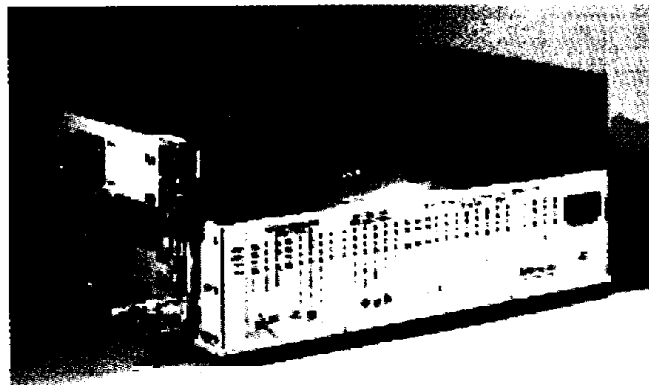
A thermal desorber accessory may be mounted on the 8610C GC. The desorber allows you to inject semivolatile analyte in a soil or solid sample without the accustomed extraction and concentration. The elimination of sample preparation speeds the analysis, reduces manipulation errors, and improves detection.

Built-in Serial 4-Channel Data System for PC

A 4-channel, serially-interfaced data acquisition system is built into the 8610C GC. No additional data acquisition hardware is required. One, two, three, or four channels may be acquired, integrated, displayed, and printed simultaneously. A provided DB-9 type RS-232 serial cable connects the GC to an open COM port on any IBM-compatible desktop, notebook PC. MS-DOS, Windows, and Windows '95 data system software versions included.

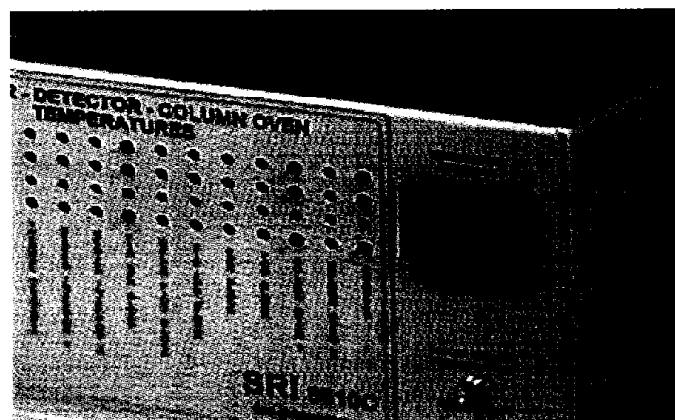


Built-in EPA Style Automated Purge-and-Trap Sampler, 10 Station P&T Autosampler Options



8610C GCs may be equipped with a built-in automated purge-and-trap sampler for concentration of purgeable organics down to the ppt level. A 10-station autosampler accessory is also available for automated, unattended analysis of multiple samples under data system control.

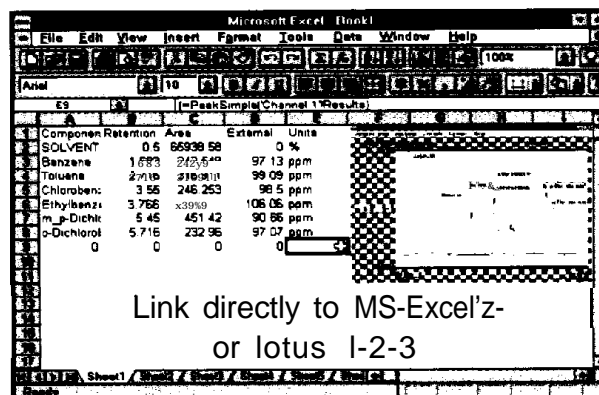
Know Your GC's Run Status "At-A-Glance"



The front control panel of the 8610C GC is equipped with an "at-a-glance" panel display that allows you to see the operational status of your GC system from across the lab, as the status of every controlled zone and sampling valve is visible on a bright LED display. Temperatures, pressures, and voltages may also be displayed on a bright LED meter.

DDE And Other Important Windows Features

Link PeakSimple to your DDE-compatible Windows applications, such as Lotus 1-2-3®, MS-Excel®, MS-Word®, and WordPerfect®. Your analytical results are automatically transported and updated to any open, linked spreadsheet or document, facilitating customized report generation, chart and graphic creation. Baseline subtraction, chromatogram overlay, on-screen retention window display and editing, and color printing are also included in our Windows versions.



8610C GC System Specifications



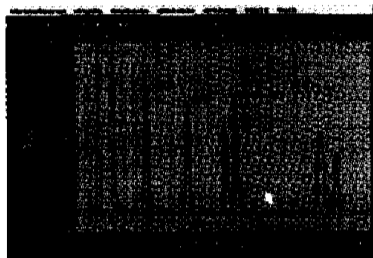
Made with pride
in the U.S.A.

GC Software

PeakSimple II for MS-DOS™ / PeakSimple for Windows™ / PeakSimple for Windows '95™

Data System Features: Four total; 1, 2, 3, or 4 channels may be displayed simultaneously. Dual, independent timebases for control of two analytical runs. Dual, independent groups for control of two GC systems. Sample rates of 1, 2, 5, 10, 20 and 50Hz available (50Hz single channel operation). Independently selectable remote start on any channel for either control group. Automatic, manual, and timed data integration available on each channel. Data files may be stored to disk in binary or ASCII text format.

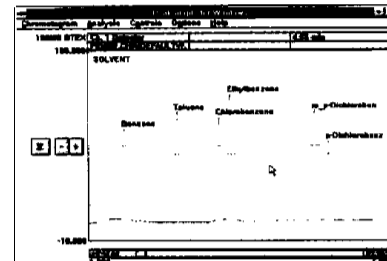
Computer Requirements: DOS version - IBM PC-compatible XT, 286 CPU or higher, with minimum 580KB of available conventional memory at system start-up, 2MB hard disk space for installation. 9-pin dot matrix or laser / inkjet printer. Windows™ version - minimum 386 CPU, Windows™ enhanced mode, 4MB RAM, 2MB hard disk space for installation. Any Windows™ -supported printer. Color printing of chromatograms is fully-supported. Common to both DOS and Windows™ versions - Hard disk drive, 3.5" high-density floppy disk drive, and one open, unshared COM port required. COM 1, 2, 3, and 4 selectable. Mouse recommended. Hercules, CGA, EGA, VGA, SVGA video formats supported.



MS-DOS version
for use with the SRI
Serial Data System and
non-Windows capable PCs
- offers most Windows
features for MS-DOS users

Spanish and German PeakSimple for Windows® versions available.

Windows version
for use with the SRI
Serial Data System and
Windows or Windows '95
(in true 16- and 32-bit
Windows versions)



GC Hardware

SRI 8610C Gas Chromatograph

Two-Year Warranty

Column Oven: Ambient to 400°C, insulated. 7.8" x 8.0" x 3.0" (19.8 x 20.3 x 7.2 cm). Dual oven model available.

Temperature Program: Unlimited ramps, holds. Program column oven temperature at up to 40°C per minute to 400°C. Recycle from 250°C to 50°C in 5 minutes or less. Optional cryo turbo-cool available.

System Gases: Electronic pressure (pneumatic) control (EPC) of all system and detector gases.

Pressure Program: Unlimited ramps, holds. Program carrier gas pressure from 0 to 100 psi at up to 99 psi per minute.

Detector Temperature: Each detector is equipped with a user-adjustable, thermostatically-controlled heating unit for maximum stability and optimal resolution (TCD and ECD are enclosed in detector ovens).

Detectors Available: PID, FID, TCD, ECD, FPD, NPD, and DELCD. Up to four detectors may be mounted on the same GC chassis. Dual-FPD, FID / FPD, FID I DELCD, FID I NPD and other combination detectors also available.

GC Injector: Direct, on-column injector for both packed and capillary columns is provided as standard equipment.

Injector Options: Liquid autosampler carousel, adjustable volume, 42 vial tray (standard 2mL screw- or crimp-top vials). Manual or automated gas sampling valves for loop sampling (thermostatted valve oven also available). Automated purge-and-trap sampler for water, soil, and gas / air sampling and concentration. Dual, independently-heated adsorbent trap units provided. Purge-and-trap uses disposable 20 cc test tubes. On-line liquid purge sampler, thermal soil desorption unit also available.

Serial Data Interface: 4-channel data acquisition system built into GC. Connection to PC via RS232 port (DB-9), 6' serial cable.

Power Requirement: 110VAC, 60Hz (220VAC, 50Hz also available).

Custom Modifications: All SRI 861 OC GCs may be custom-configured for your specific application at the factory.

Dimensions I Weight: 18.5"W x 14.5"D x 12.5"H" (47.0 x 36.8 x 31.75 cm), 40 to 70 Lbs. (18 to 32 kilos). Shipping case provided.

Your analyses are extreme/y valuable. Your gas chromatograph system should be state-of-the-art. For your next GC system, choose SRI.

SRI

SRI Instruments

Corporate Headquarters:
3882 Del Amo Blvd., Suite 601
Torrance, California 90503 U.S.A.
Phone: (310) 214-5092 Fax: (310) 214-5097
Internet: 75310.434@compuserve.com

International distributors available worldwide
Call or write us for your free VHS demonstration
video tape, software disk, and product information
(Please specify your video broadcast format)
Visit our homepage via Yahoo! Search key: SRI GC